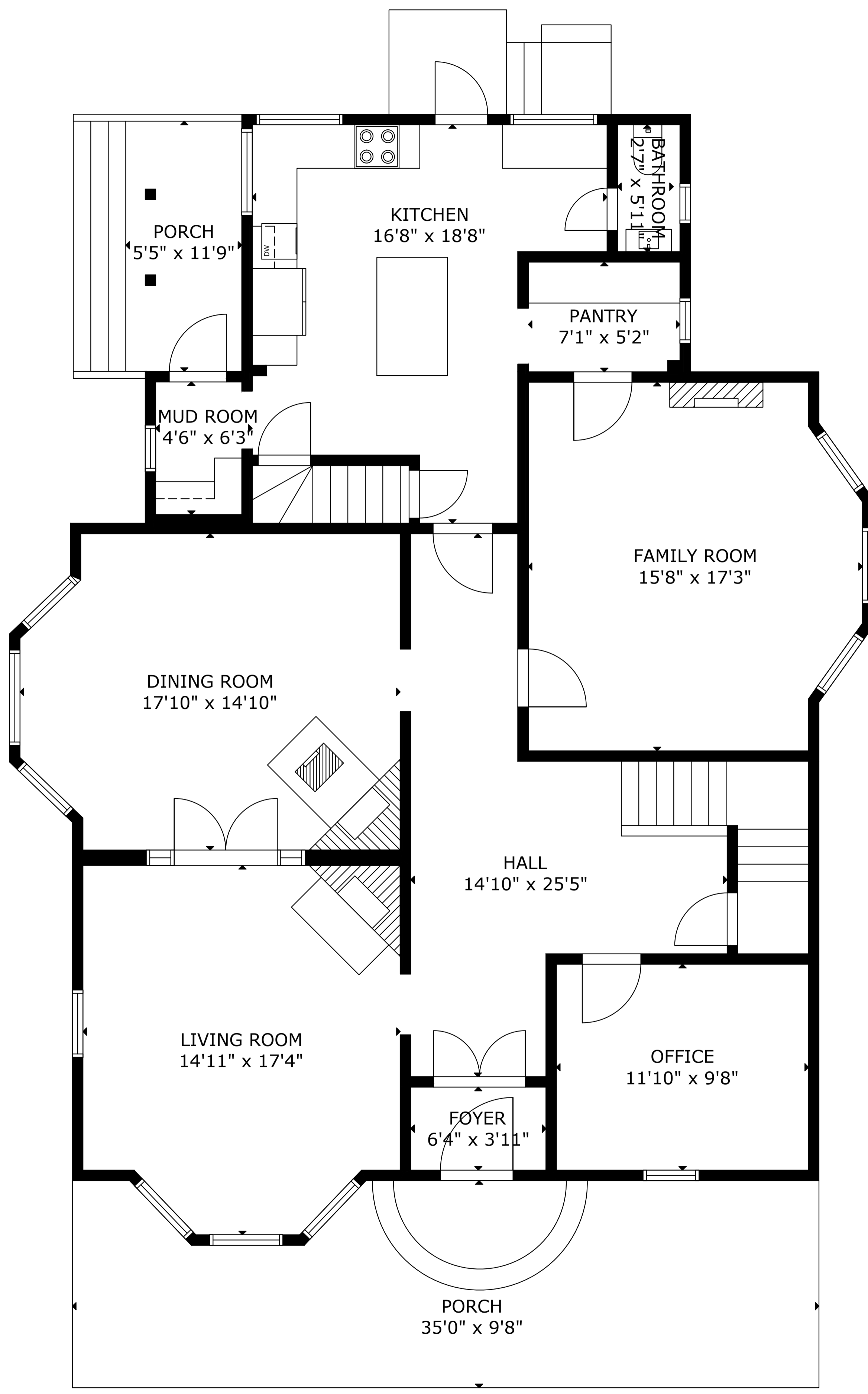
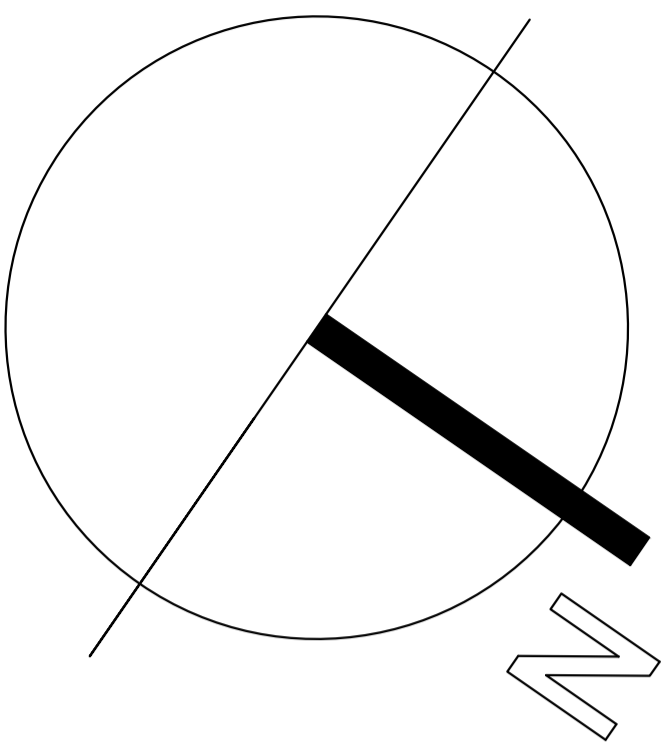


67 Dufferin St



GROSS INTERNAL AREA

TOTAL: 5,833 sq ft

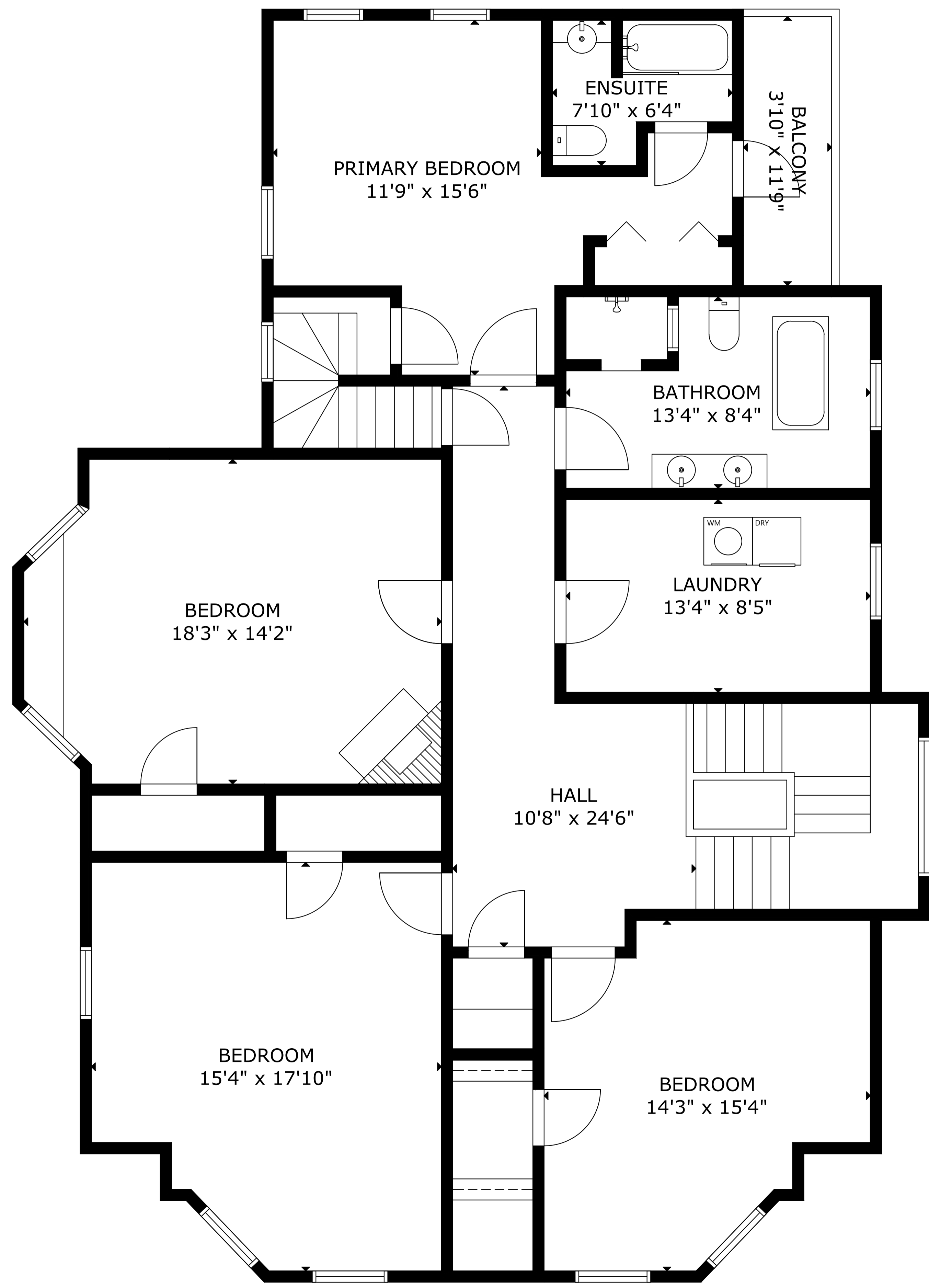
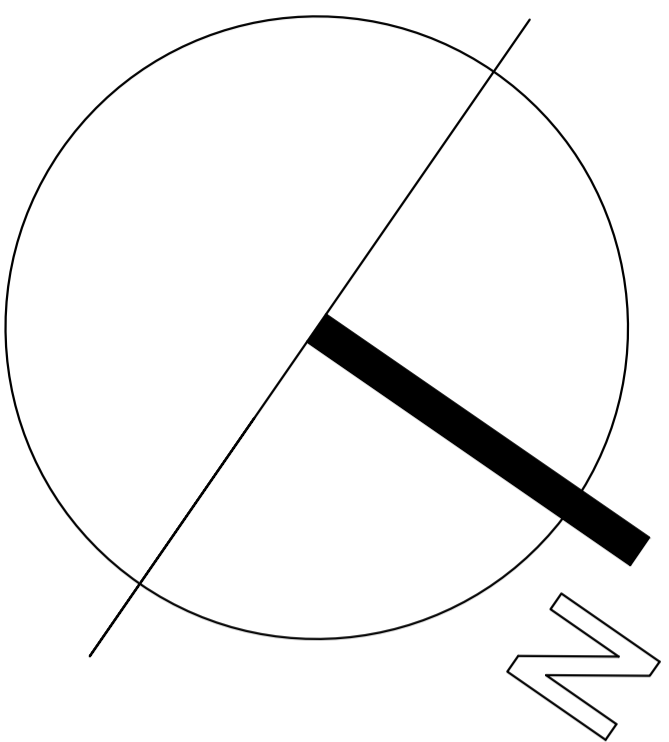
FLOOR 1: 1,462 sq ft, FLOOR 2: 1,547 sq ft

FLOOR 3: 1,621 sq ft, FLOOR 4: 1,203 sq ft

EXCLUDED AREA: PORCH: 379 sq ft, BALCONY: 45 sq ft

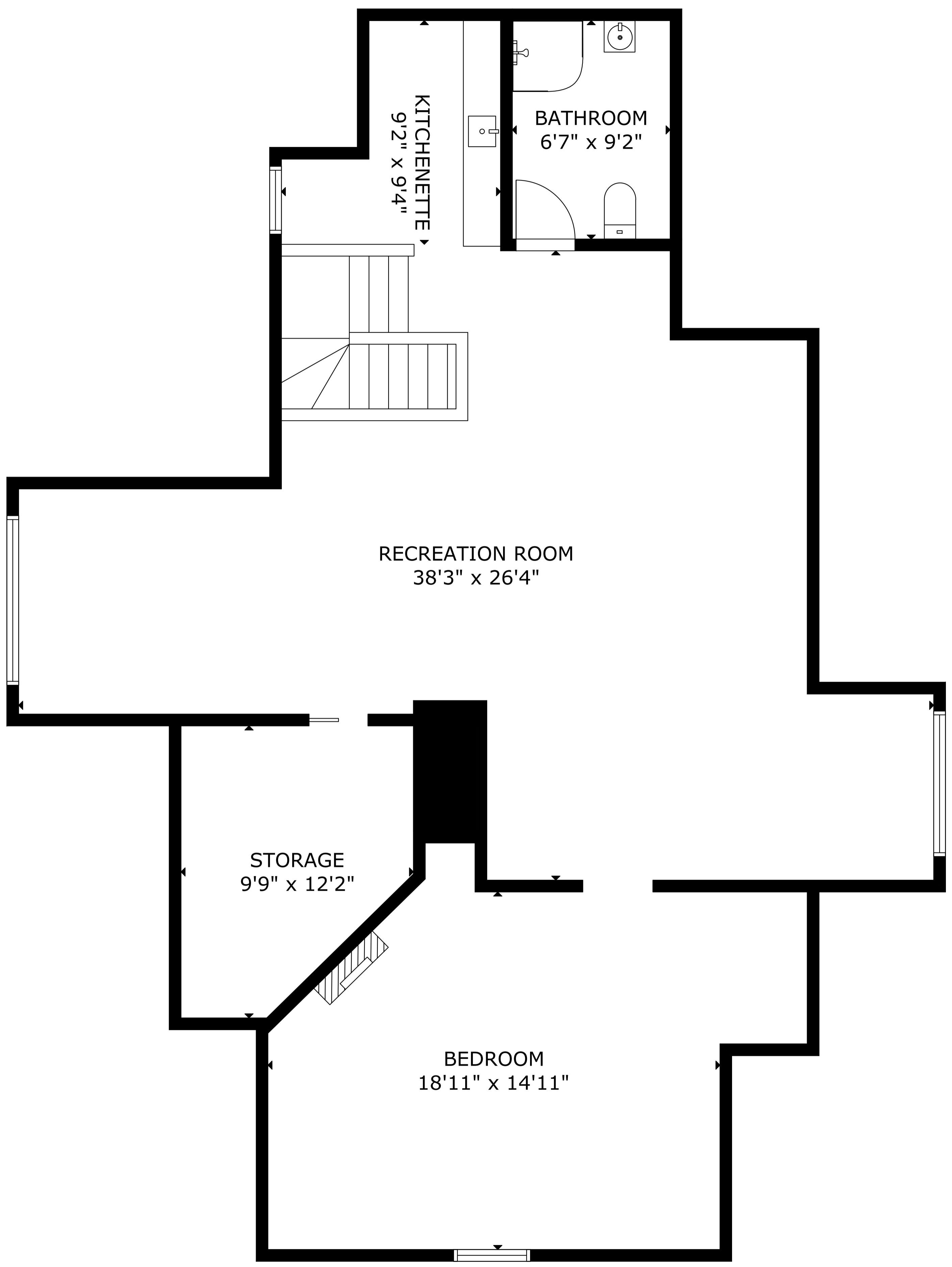
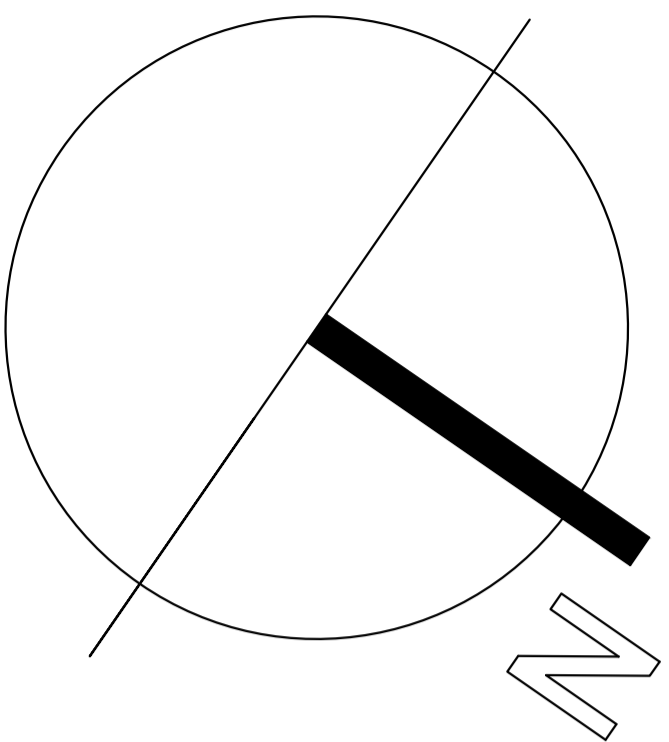
SIZE AND DIMENSIONS ARE APPROXIMATE, ACTUAL MAY VARY.

67 Dufferin St



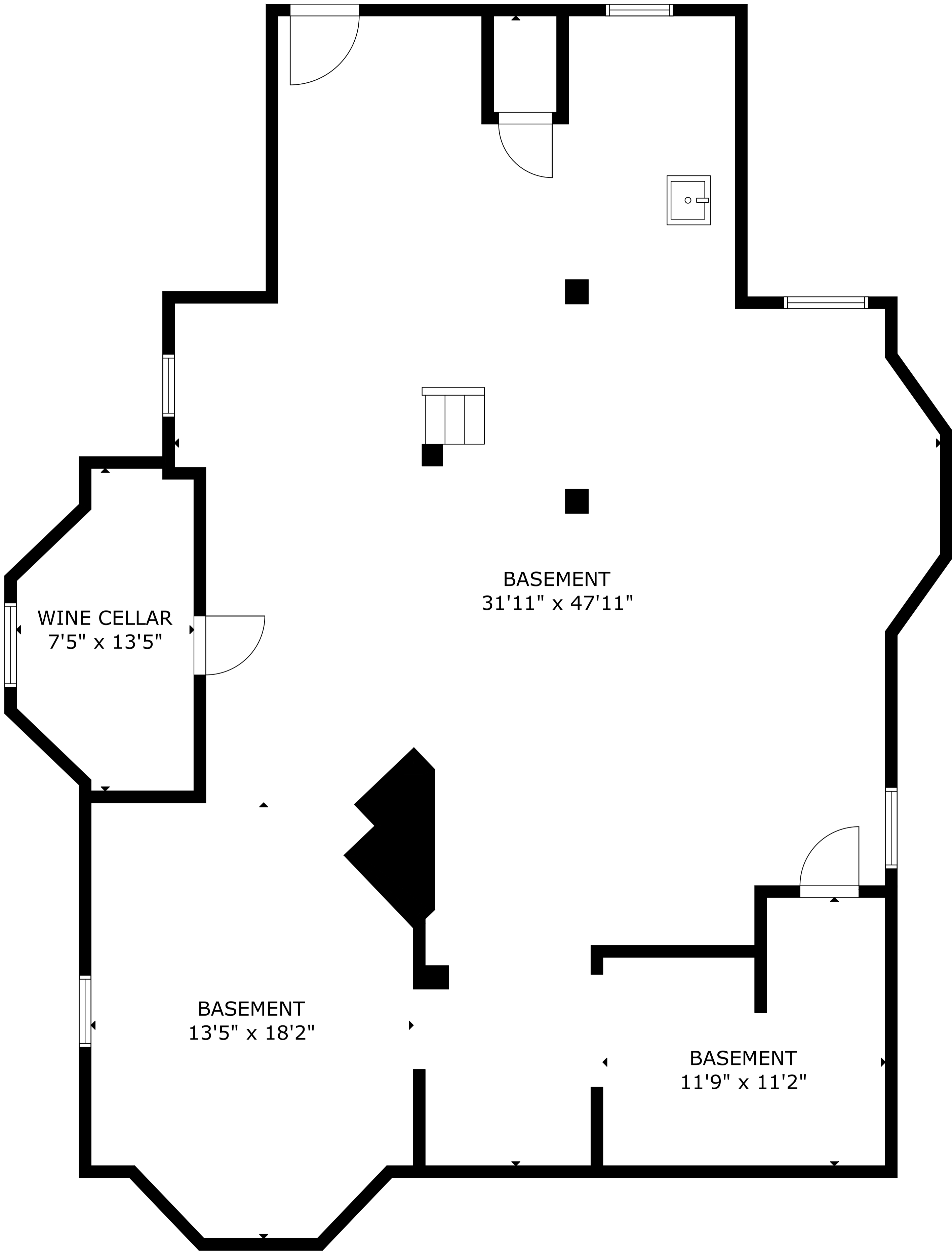
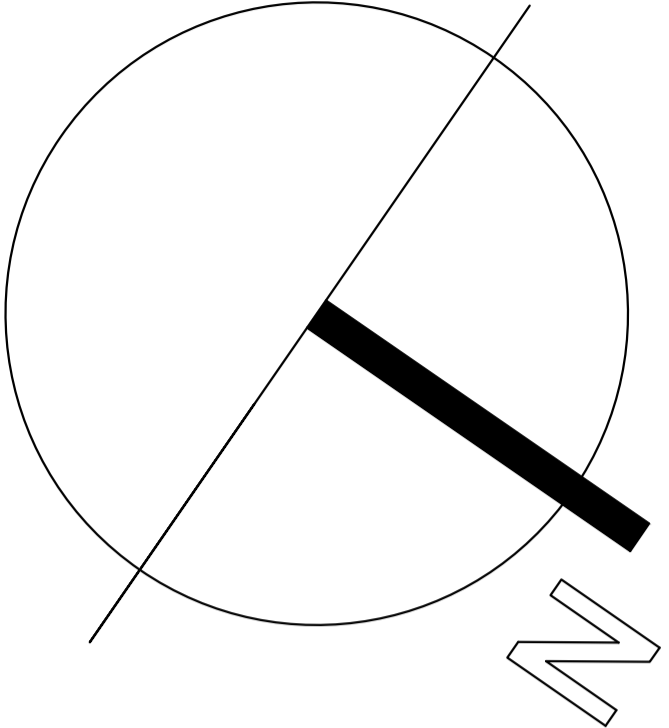
GROSS INTERNAL AREA
TOTAL: 5,833 sq ft
FLOOR 1: 1,462 sq ft, FLOOR 2: 1,547 sq ft
FLOOR 3: 1,621 sq ft, FLOOR 4: 1,203 sq ft
EXCLUDED AREA: PORCH: 379 sq ft, BALCONY: 45 sq ft
SIZE AND DIMENSIONS ARE APPROXIMATE, ACTUAL MAY VARY.

67 Dufferin St



GROSS INTERNAL AREA
TOTAL: 5,833 sq ft
FLOOR 1: 1,462 sq ft, FLOOR 2: 1,547 sq ft
FLOOR 3: 1,621 sq ft, FLOOR 4: 1,203 sq ft
EXCLUDED AREA: PORCH: 379 sq ft, BALCONY: 45 sq ft
SIZE AND DIMENSIONS ARE APPROXIMATE, ACTUAL MAY VARY.

67 Dufferin St



FLOOR 1

GROSS INTERNAL AREA
TOTAL: 5,833 sq ft
FLOOR 1: 1,462 sq ft, FLOOR 2: 1,547 sq ft
FLOOR 3: 1,621 sq ft, FLOOR 4: 1,203 sq ft
EXCLUDED AREA: PORCH: 379 sq ft, BALCONY: 45 sq ft
SIZE AND DIMENSIONS ARE APPROXIMATE, ACTUAL MAY VARY.