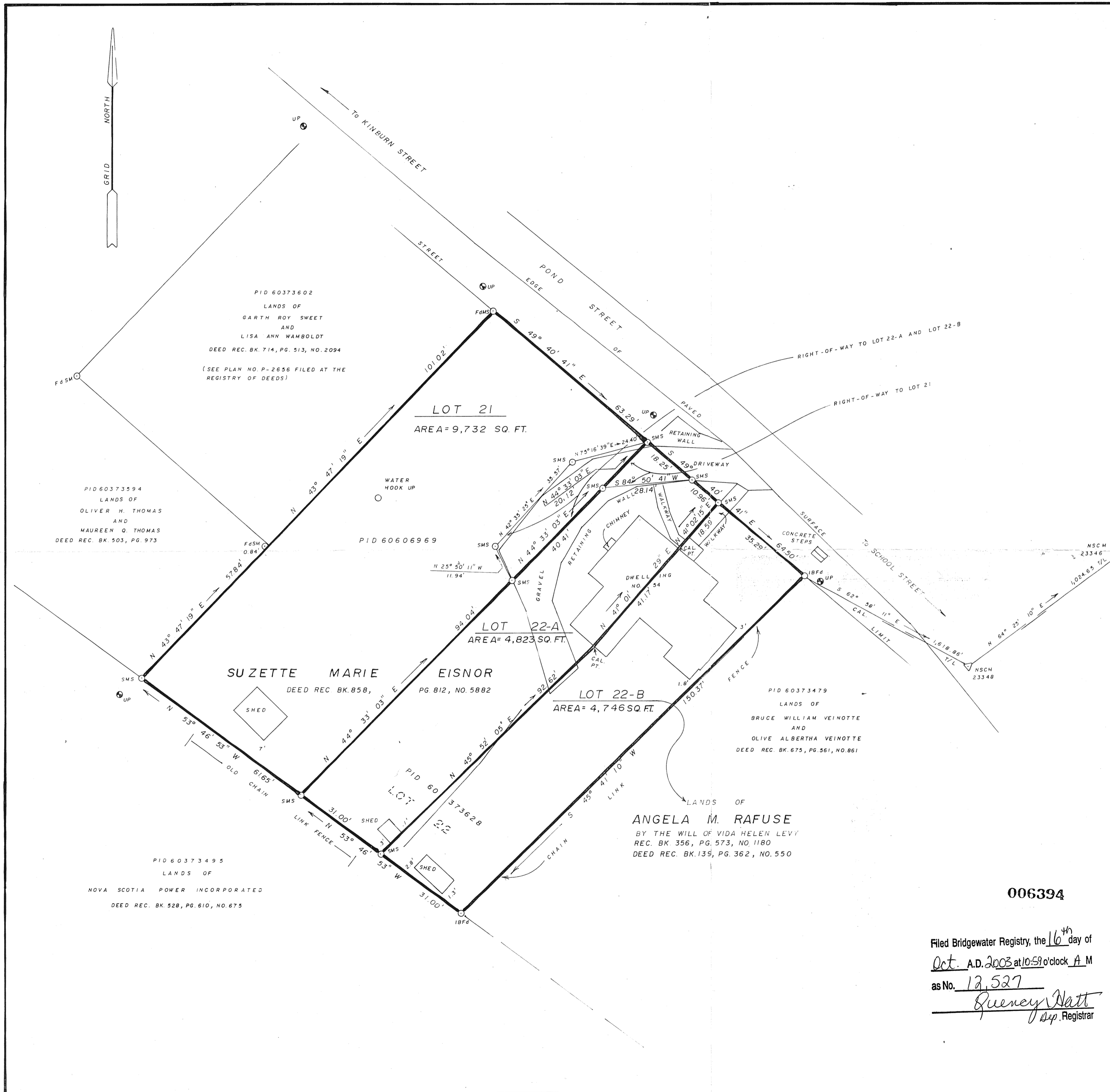


KEY PLAN SHEET 21 A/B SCALE 1:50,000



- LEGEND -
- Boundary of lands surveyed
  - Boundary of adjacent lands
  - Overhead utility line
  - Line not to scale
  - X-X-X-X-X- Fence line
  - Centerline
  - UP Utility Pole
  - NSCM Nova Scotia Control Monument
  - SM Survey Marker (iron bar with identification cap)
  - IB Iron Bar
  - IP Iron Pipe
  - CC Cross Cut
  - WB Wooden Bound
  - RP Rock Post
  - TS Traverse Station
  - Fd Found
  - S Set
  - CAL Calculated
  - T/L Tie Line
  - BC Beginning of Curve
  - EC End of Curve
  - WIT Witness

All angles and distances were measured in the field, unless otherwise noted, and are unadjusted.  
 No scale factor has been applied, unless otherwise noted.  
 THE BEARINGS ARE:  MAGNETIC for the year \_\_\_\_\_  
 GRID based on the 3° modified transverse mercator projection having central meridian 64°-30' west and are referenced to Nova Scotia Control Monument numbers  
 See PLAN NO 11,910 filed at the Registry of Deeds.

**SURVEYOR'S CERTIFICATE**  
 I, Gerald D. Eisnor, Nova Scotia Land Surveyor, hereby certify that the survey represented by this plan was conducted under my supervision, and that the survey and plan were made in accordance with the Nova Scotia Land Surveyors Act and the regulations made thereunder.

Dated this 24 day of JULY A.D. 2003  
Gerald D. Eisnor N.S.L.S. No. 525

PLAN OF SURVEY SHOWING LOT 21 AND LOT 22-A LANDS OF SUZETTE MARIE EISNOR AND LOT 22-B LANDS OF ANGELA M. RAFUSE LOCATED AT 54 POND STREET, MAHONE BAY, LUNENBURG COUNTY, NOVA SCOTIA.

REVISIONS:

	N.S.L.S. #525 Subdivision and Woodland Surveys Aquaculture Lease Boundary Surveys Location Certificates	Phone and Fax <b>634-3614</b>
	RR 3, Lunenburg (Fauxburg), Lunenburg County, NS B0J 2C0	

Field surveys were carried out during the period of JULY 8, 2003 JULY 14, 2003

DRAWN BY: REID LOHNES	SCALE: 1" = 20'
DATE: JULY 24, 2003	PLAN NO: 03-1077

**006394**

Filed Bridgewater Registry, the 16<sup>th</sup> day of Oct. A.D. 2003 at 10:59 o'clock A M  
 as No. 12,527  
Quency Watt  
 Dep. Registrar

