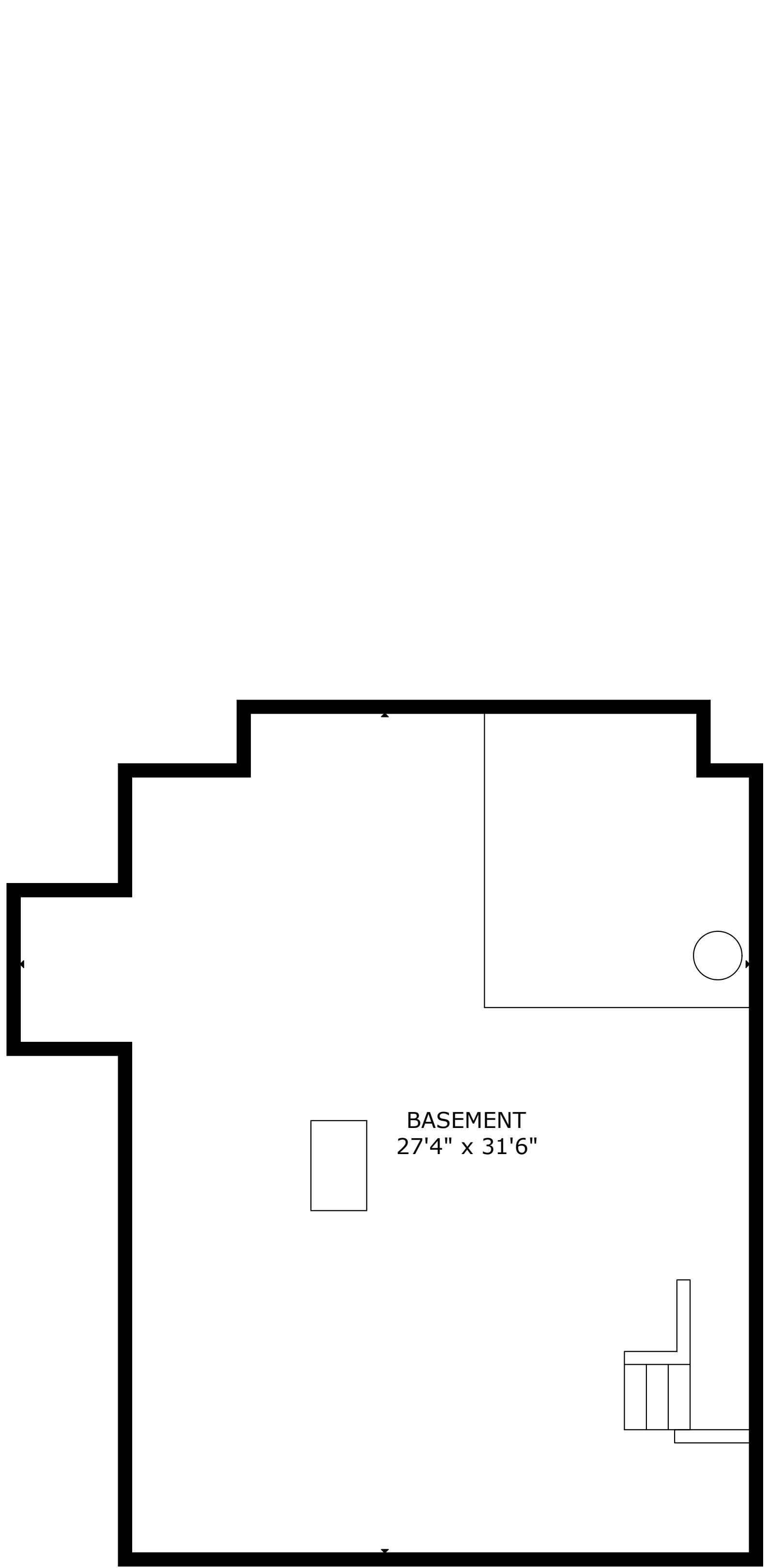
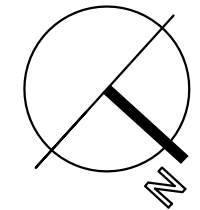
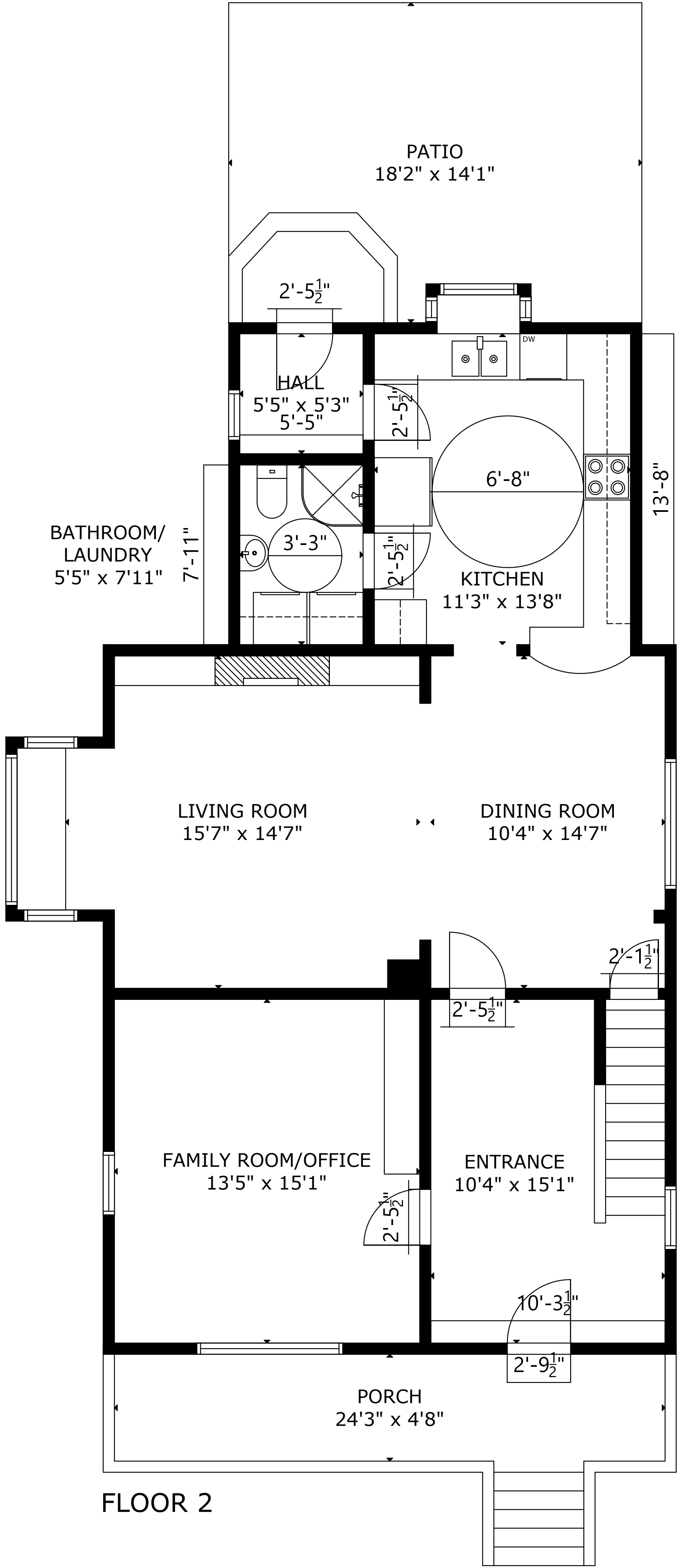


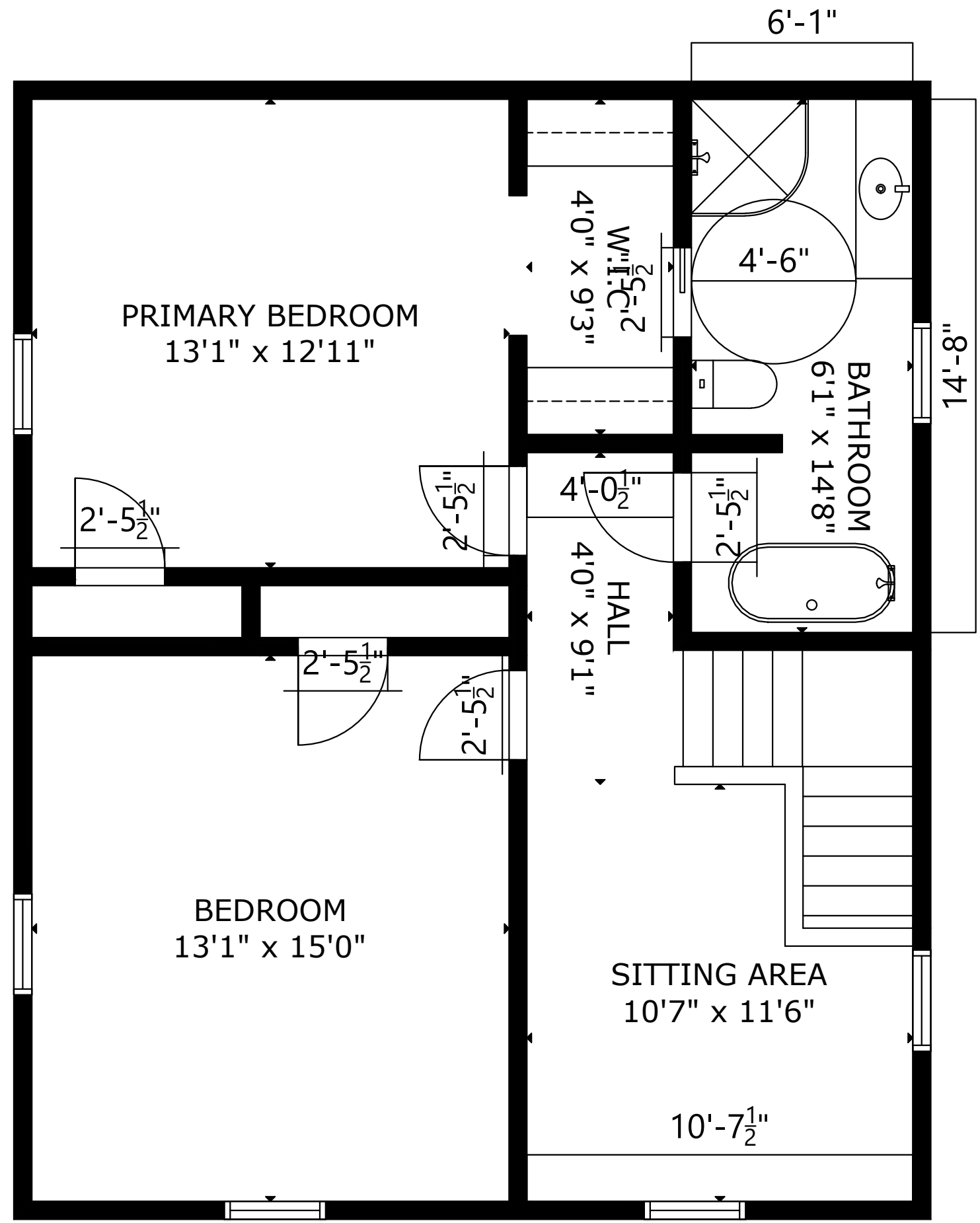
48 Maple St, Mahone Bay NS B0J 2E0, CA



FLOOR 1



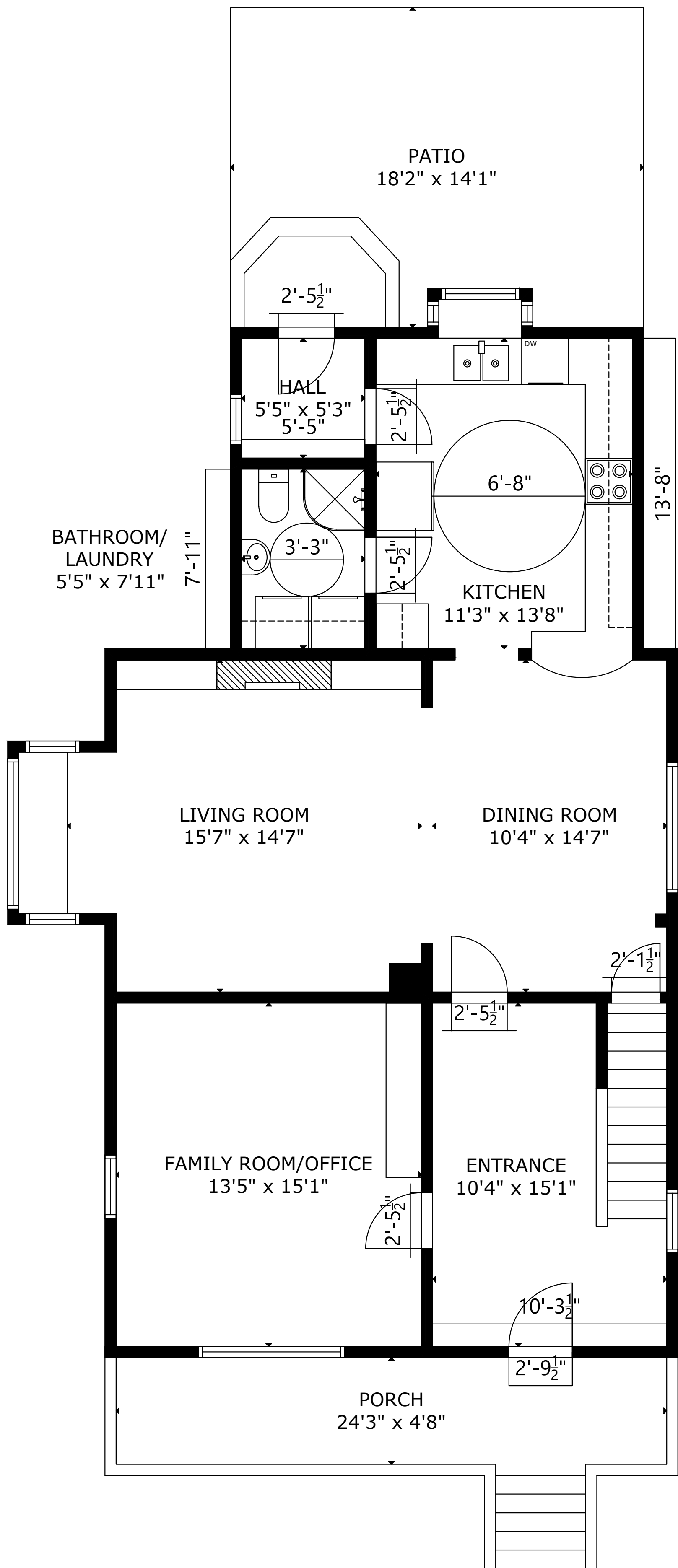
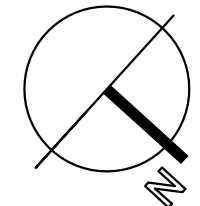
FLOOR 2



FLOOR 3

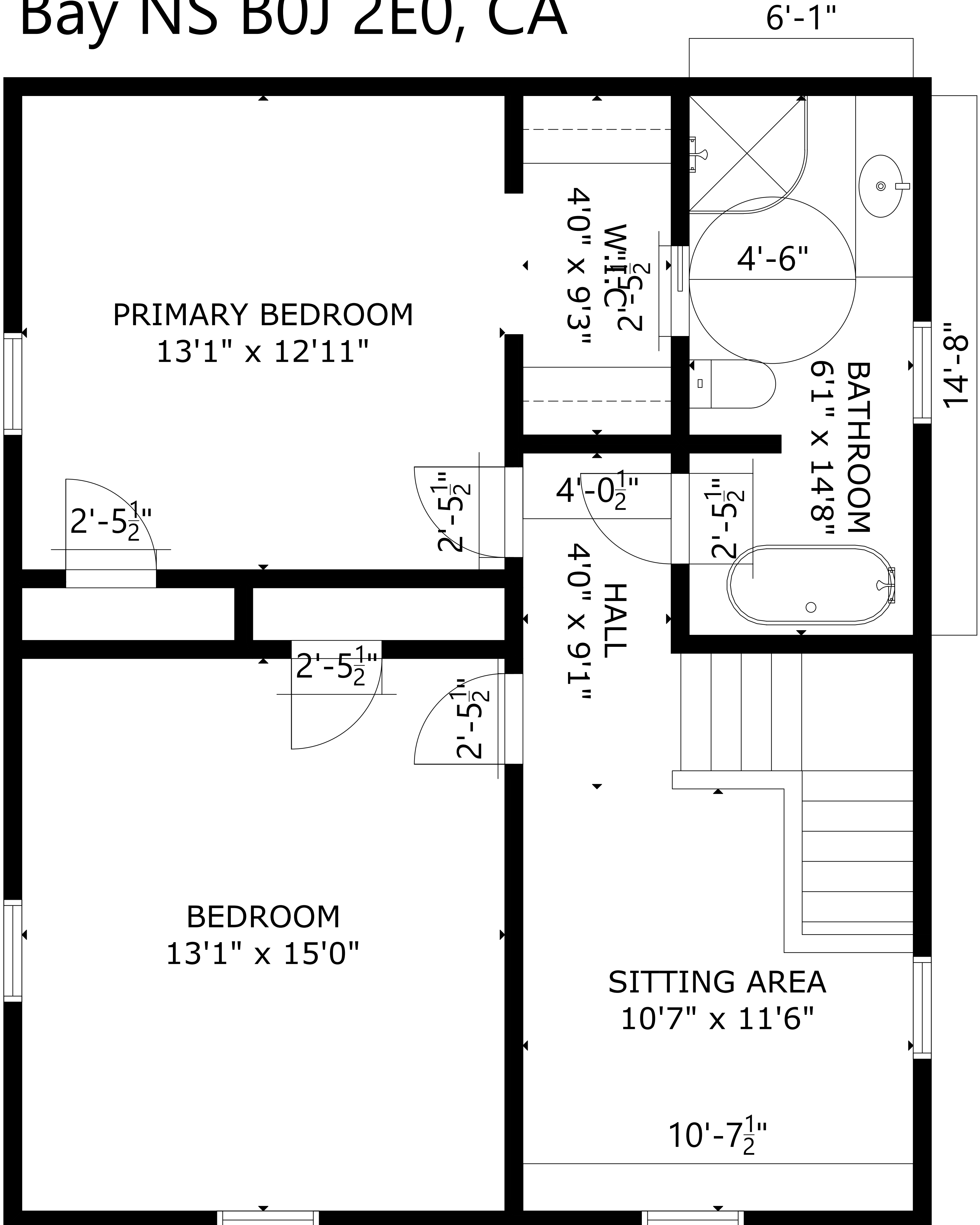
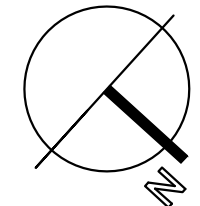
GROSS INTERNAL AREA
 TOTAL: 2,484 sq ft
 FLOOR 1: 738 sq ft, FLOOR 2: 1,012 sq ft, FLOOR 3: 734 sq ft
 EXCLUDED AREA: PATIO: 256 sq ft, PORCH: 114 sq ft
 SIZE AND DIMENSIONS ARE APPROXIMATE, ACTUAL MAY VARY

48 Maple St, Mahone Bay NS B0J 2E0, CA



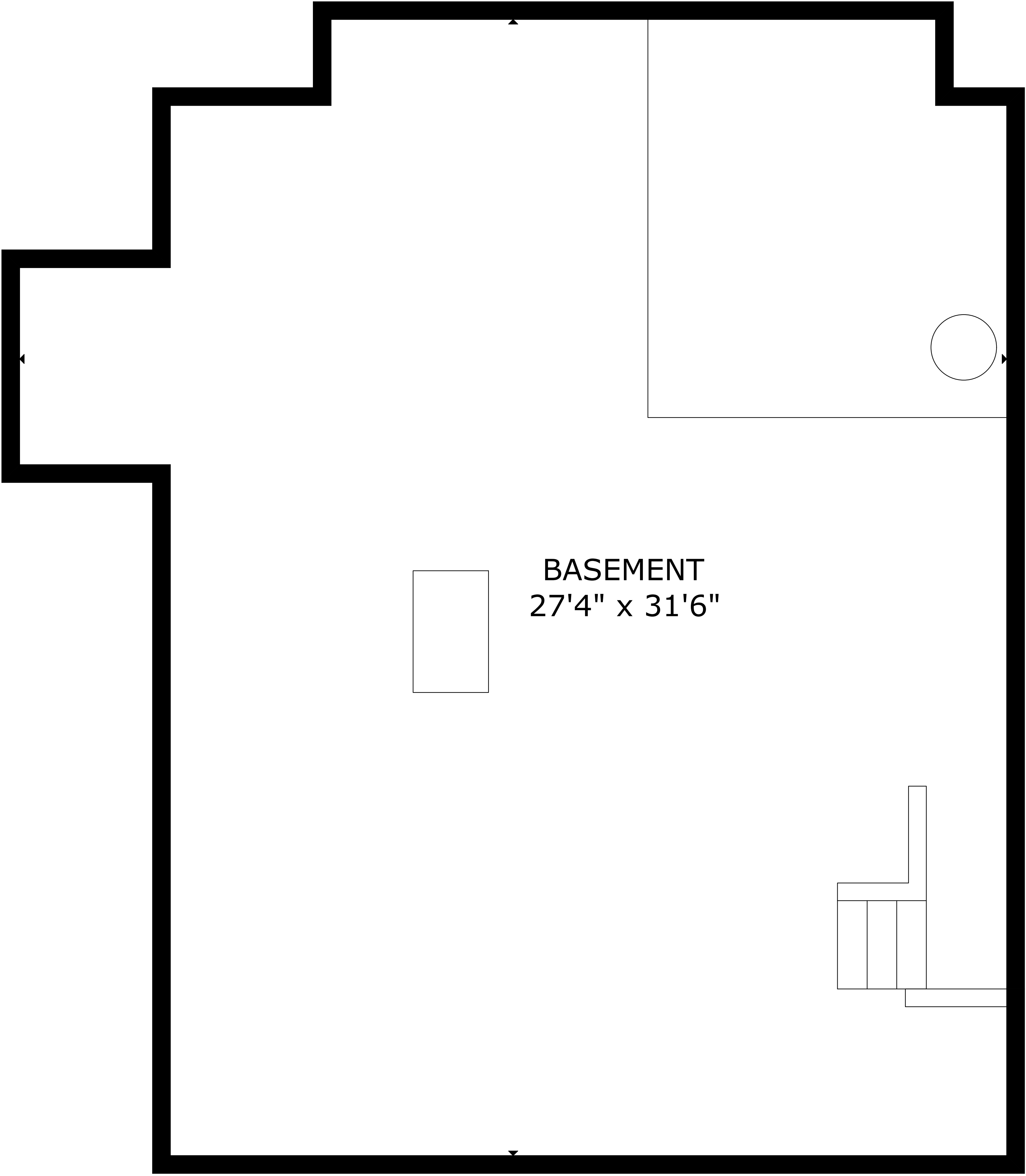
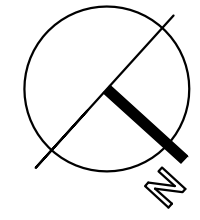
GROSS INTERNAL AREA
TOTAL: 2,484 sq ft
FLOOR 1: 738 sq ft, FLOOR 2: 1,012 sq ft, FLOOR 3: 734 sq ft
EXCLUDED AREA: PATIO: 256 sq ft, PORCH: 114 sq ft
SIZE AND DIMENSIONS ARE APPROXIMATE, ACTUAL MAY VARY

48 Maple St, Mahone Bay NS B0J 2E0, CA



GROSS INTERNAL AREA
TOTAL: 2,484 sq ft
FLOOR 1: 738 sq ft, FLOOR 2: 1,012 sq ft, FLOOR 3: 734 sq ft
EXCLUDED AREA: PATIO: 256 sq ft, PORCH: 114 sq ft
SIZE AND DIMENSIONS ARE APPROXIMATE, ACTUAL MAY VARY

48 Maple St, Mahone Bay NS B0J 2E0, CA



GROSS INTERNAL AREA
TOTAL: 2,484 sq ft
FLOOR 1: 738 sq ft, FLOOR 2: 1,012 sq ft, FLOOR 3: 734 sq ft
EXCLUDED AREA: PATIO: 256 sq ft, PORCH: 114 sq ft
SIZE AND DIMENSIONS ARE APPROXIMATE, ACTUAL MAY VARY